

Installing Guide for Tubular Cam Locks

TOOLS NEEDED TO INSTALL:

7/16" Socket for Nylon Nut and a 7/8" Deep Socket for Mounting Nut or Open End Wrench.

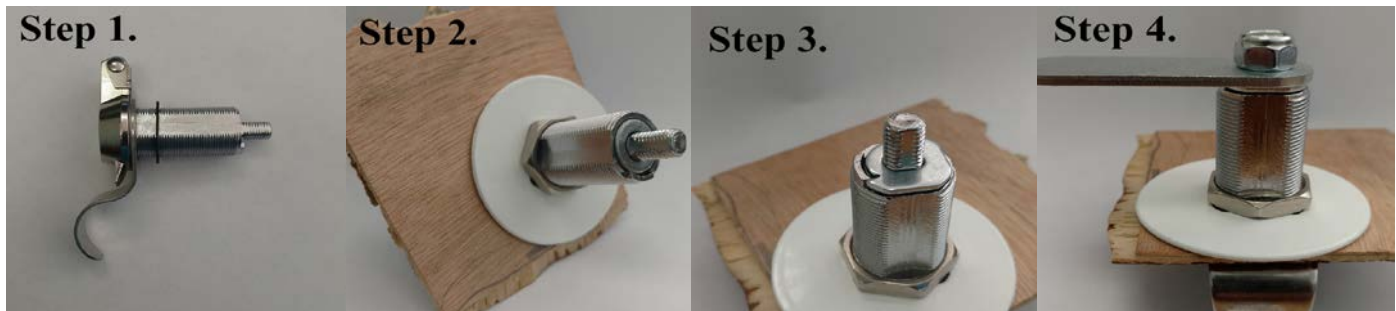
ORDER OF INSTALLATION (IF ORDERED):

Lock – Dust Cover – Finger Pull – Gasket – [Desired Lock Location] – Backing Plate – Mounting Nut – Governor – Tubular Cam – Nylon Nut



If none or some lock accessories were purchased, continue with the Order of Installation

EXAMPLE:



STEP 1 – (IF PURCHASED) Attach Dust Cover, Finger Pull, and Rubber Gasket over the Tubular Lock.

STEP 2 – (IF PURCHASED) Slide Step 1 pieces through compartment hole and attach the Backing Plate & twist on the Mounting Nut at the back of the lock to hold the pieces together.

STEP 3 – Place Cam Governor over the lock stud to fit flat against the back part of the lock.

STEP 4 – Attach Cam and tighten the Nylon Nut with a 7/16" Socket or Open End Wrench until it touches the cam.

CUSTOMER DISCLAIMER

OVER TIGHTENING CAN LEAD TO BREAKING OF THE LOCK STUD or BINDING OF THE LOCK FROM BEING ABLE TO TURN KEY.

INDUSTRIAL LOCK & HARDWARE, INC.

40222 La Quinta Lane * Building B Unit 101 * Palmdale Ca. 93551
(800) 932-9490 Toll Free * (661) 224-1010 Direct * (661) 224-1011 Fax
www.iss4locks.com * www.ch751.com * sales@ch751.com